

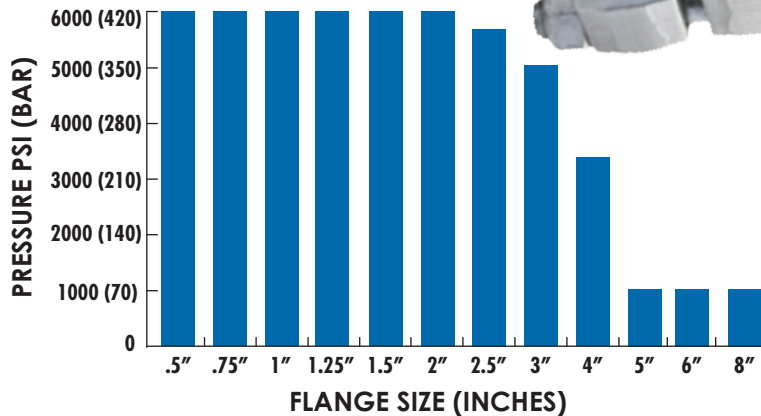
NON-WELDED PIPING SOLUTIONS & COMPONENTS



37° FLARE FLANGE CONNECTION



**FLARE CONNECTION
MAX. PRESSURE RANGE
(CARBON STEEL/STAINLESS STEEL)**



The Flare Flange connection is based on flaring the pipe end to 37 degrees and utilizing flare flanges and two cone inserts. The o-ring face cone insert mates to the flat face cone insert, which produces the primary seal. Both cone inserts have back up o-rings, which seal against the 37 degree flare. Bolting the connection draws the flanges against the flared pipe ends joining the cone inserts together. The 37 degree flare flange connection is available from ½" - 8" and pressures up to 6000 PSI (420 Bar) and conforms to SAE, ISO and other flanges patterns.

- Size Range ½" through 8"
- Pressures to 6000 PSI (420 Bar)
- Safety Factor - min. 4:1
- Metric and Imperial Sizes Available

SYSTEM BENEFITS: OVERALL INSTALLED COST SAVINGS

PROVEN LEAK-FREE SYSTEM

EASE OF INSTALLATION

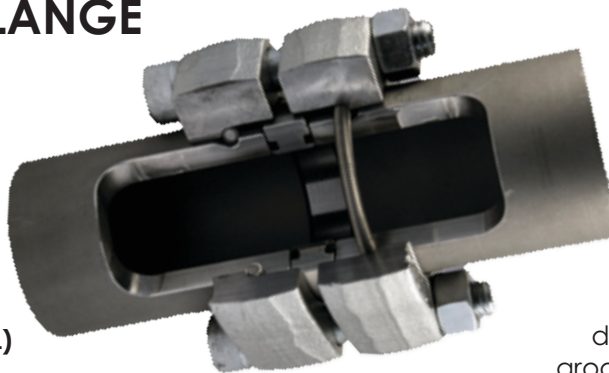
NO ACID CLEANING

IMPROVED FLOW CHARACTERISTICS

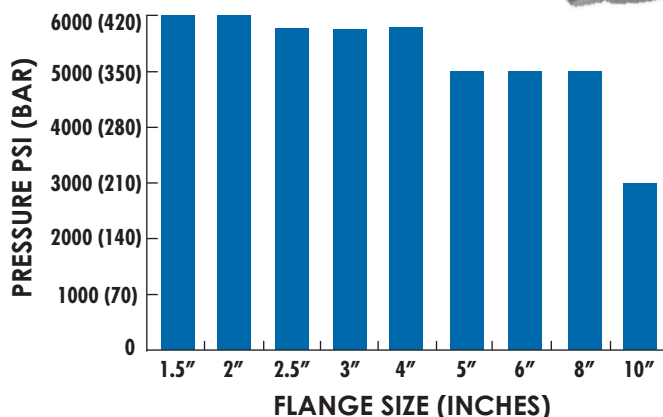
NO WELDING

NO X-RAY

RETAIN RING FLANGE CONNECTION



**RETAIN RING
CONNECTION
MAX. PRESSURE RANGE
(CARBON STEEL/STAINLESS STEEL)**



The retain ring flange connection is based on grooving the pipe and utilizing retain ring flanges, an o-ring spacer and retain rings. This connection uses heavy wall pipe and has a machined butt end face, along with an annular groove on the outside diameter. After machining, the flange is slipped on the pipe and the retain ring is sprung over the outside diameter of the pipe into the annular groove. The o-ring spacer is placed between the ends of the pipe and centered within the flanges. Bolting the connection together draws the flanges against the retain rings and o-ring spacer which seals against both pipe ends. The retain ring flange connection is available from 1½" - 10" and pressures up to 6000 PSI (420 Bar) and conforms to SAE, ISO and other flanges patterns.

- Size Range 1½" through 10"
- Pressures to 6000 PSI (420 Bar)
- Safety Factor - min. 4:1
- Metric and Imperial Sizes Available

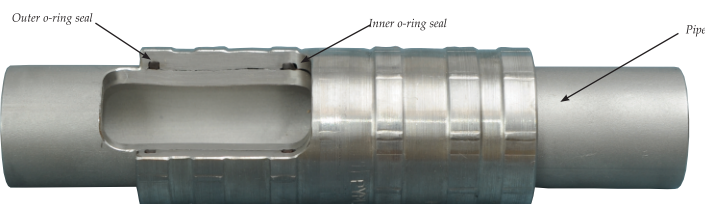


IT'S THE WELDLESS, THREADLESS WAY TO JOIN PIPE/TUBE.

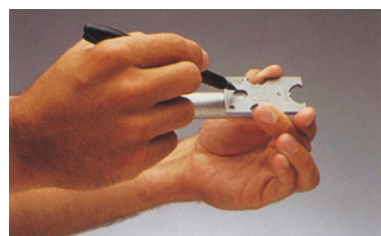
LEAKFREE PERFORMANCE, REDUCED INSTALLED COST AND MINIMIZED DOWNTIME.

Tube-Mac® Pyelok® connecting system is sparkless and has a successful history of pipe and tube fabrication in the most demanding environments and systems, where fire safety is essential.

Using a portable, hand-held installation tool, fittings are cold worked and permanently compressed onto piping. This process deforms the pipe diameter a controlled amount, thus forming a permanent leaktight seal.



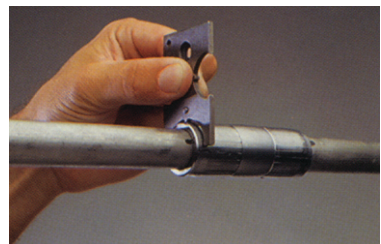
Pyelok® Fittings can be used on stainless steel, copper, nickel and carbon steel pipe or tube.



Apply mark in window using insertion gage.



Position PYPELOK® tooling around fitting assembly and pressurize.

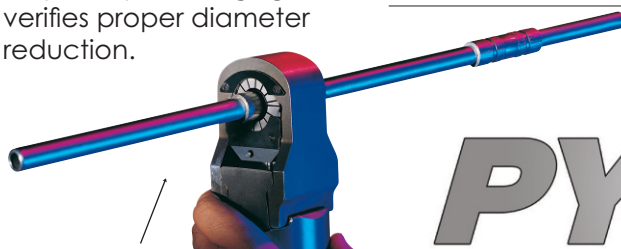


Verify completed joint using same insertion gage.

HOW PYPELOK® IS INSTALLED.

The unique characteristics of the Tube-Mac® Pyelok® Fitting system allows for installation on piping/tubing with normal tolerances and surface conditions.

Tooling is positioned around the fitting assembly and is pressurized using a manual, or electric pump. The tool converts linear force into radial force, compressing, or swaging, the fitting and piping material together. The resulting connection results in joint tensile strength greater than the minimum pipe yield. A simple inspection gage verifies proper diameter reduction.



**THE TUBE-MAC®
PYPELOK® SYSTEM**

THE ADVANTAGES OF PYPELOK'S SEALING CHARACTERISTICS.

Tube-Mac® Pyelok® Fittings incorporates unique sealing capabilities. It utilizes four non-metallic o-rings, which make Pyelok® Fittings adaptable to normal pipe and tube tolerances and surface conditions.

The outer o-ring seals prevent outside contaminants from entering the system.

The Tube-Mac® Pyelok® system is extremely versatile: Ideal for gaseous systems as well as fluids. Also available in various shapes: tees, elbows, 45° and 90°, reducers and custom ends.

USE IT ANYWHERE YOU'D WELD... BUT WOULDN'T WANT TO.

Now you can have the benefits of a welded joint, but without the hazards of hot work, using the Tube-Mac® Pyelok® coupling. It's not only a permanent system, it's also sparkless. It goes on cold. Which means all of the risks and requirements associated with "hot work" are avoided. And the permanent characteristics of the Tube-Mac® Pyelok® system make it ideal in place of welded flanges and threaded fittings which are prone to leaks due to flexure or vibration.

No hot work permits, no x-rays, no gas freeing, no system flushing or purging, no attached slag or contaminants enter the piping system. And with easy installation method, there is a substantial reduction of system downtime for repairs.

FITTING SPECIFICATIONS.

Fitting Material:	<i>Stainless Steel Type 316, Duplex and Super Duplex, Carbon Steel, Copper Nickel 70/30 CuNi</i>
Pressure Range:	<i>Up to 9300 PSI (640 bar) with 3:1 Safety Factor</i>
Fitting Size Range:	<i>1/4" to 4" NPS PIPE, 1/4" to 2" OD TUBE and 6mm to 60mm Tube</i>
Seal Material/Operating Temperature:	<ul style="list-style-type: none">• Viton -15°F to 400°F (-26°C to 205°C)• EPDM (for Steam Applications) -60°F to 400°F (-51°C to 205°C)
Approvals and Testing:	<ul style="list-style-type: none">• ABS, DNV, BV, LR, CCS, RMRS, CRN and NAVSEA• API 6FB and ISO 15540/19921 fire tested• Meets ASME B31.1 and B31.3 Requirements• MIL-S-901D shock tested

PYPELOK®
FITTINGS

Non-Welded Piping Technologies

Industries Served:

MUNICIPAL
INFRASTRUCTURE

MARINE / OFFSHORE

LAND BASED OIL RIGS

OIL & GAS

STEEL

FORESTRY

PULP & PAPER

SIMULATION

MINING

INSTRUMENTATION

Typical Applications:

Maintenance Facilities

Steering Lines, Cutter Heads,
Winch Systems

Hyd. Top-Drive, ADR, CT Rig,
Flush-By Rig

LNG, CNG

Tundish, EAF, Reheat Furnace

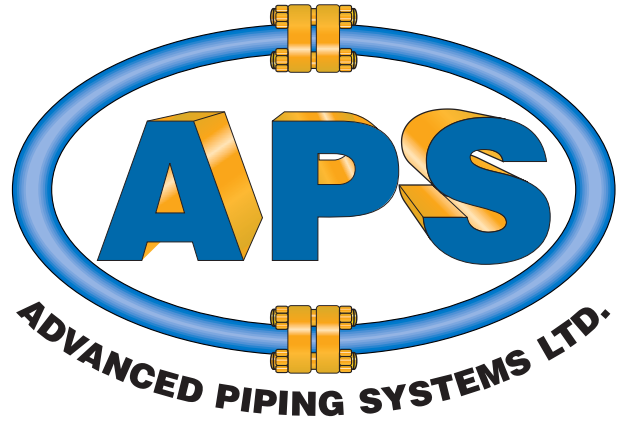
Wood Room, Truck Dumper,
Sizer, CTL Lines, OSB, LVL, MDF

Truck Dumper, Digester

Engine & Transmission Test

Crusher Systems, Lube & Air,
Oil & Fuel, Storage & Distribution

Control Panels



**BAY #1, 703-11 Ave
Nisku, Alberta
Canada T9E 7R2**

Tel: 780-979-0050

Fax: 780-979-0051



Connection	Size Ranges	Pressure Rating	Material
37° Flare Pipe	½" - 8" NPS 20mm - 203mm O/D	up to 6000 PSI, ANSI B31.3 (420 bar)	Carbon / Stainless Steel
Retain Ring	1½" - 10" NPS 56mm - 254mm O/D	up to 6000 PSI, ANSI B31.3 (420 bar)	Carbon / Stainless Steel
Pyplok	¼" - 4" OD and NPS 6mm - 100mm O/D	up to 9000 PSI, ANSI B31.3 (620 bar)	Carbon / Stainless Steel
37° Flare Tubing	¼" - 2" OD	up to 5000 PSI	Carbon / Stainless Steel

Flushing Services:

- DYNAMIC PRESSURE TESTING • OIL FLUSHING • OIL SAMPLING • VACUUM DEHYDRATION

Field Services:

- ON-SITE SUPERVISION • FIELD INSTALLATION • JOB SITE TRAILERS • SITE INSPECTION / LAYOUT
- PIPE LAYOUT & DESIGN • PORTABLE INSTALLATION EQUIPMENT